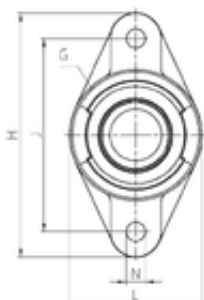




BEARING CORP.OF AMERICA



SNR EXFL209 Bearing units

Bearing No. EXFL209

Bore Diameter	45 mm
d	45 mm
e	22 mm
s	21,4 mm
A	38 mm
A1	16 mm
B1	56,3 mm
D2	63,5 mm
H	188 mm
J	148 mm
L	108 mm
N	19 mm
Thread (G)	M6x1
A2	56,9 mm
Weight	2,1 Kg
Basic dynamic load rating (C)	31,85 kN

EXFL209 Bearing 2D drawings and 3D CAD models